

FOR SALE > LAND/RETAIL PROPERTY



24 Acres of Multi-Use Land

NWC EMERSON AVE. & EDGEWOOD AVE. INDIANAPOLIS, IN 46237



Versatile Land > Office/Retail Property

Three parcels are combined in the 24 acres which currently includes 14.17 acres of retail/office and 9.929 acres of agricultural.

Property Details

- > 24 Acres, can be divided
- > Sale Price: \$2,000,000
- > Signalized intersection
- > South Emerson is a major thoroughfare on the Southeast side of Indianapolis and connects neighborhoods and retail from I-465 to I-65.

Demographics*

	1 Mile	3 Mile	5 Mile
Population	7,952	78,600	182,123
Average Income	\$75,593	\$62,502	\$57,422
Daytime Population	2,633	20,456	64,114

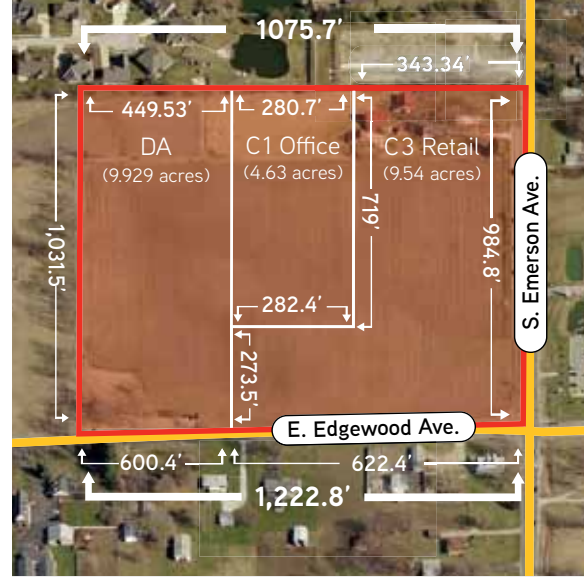
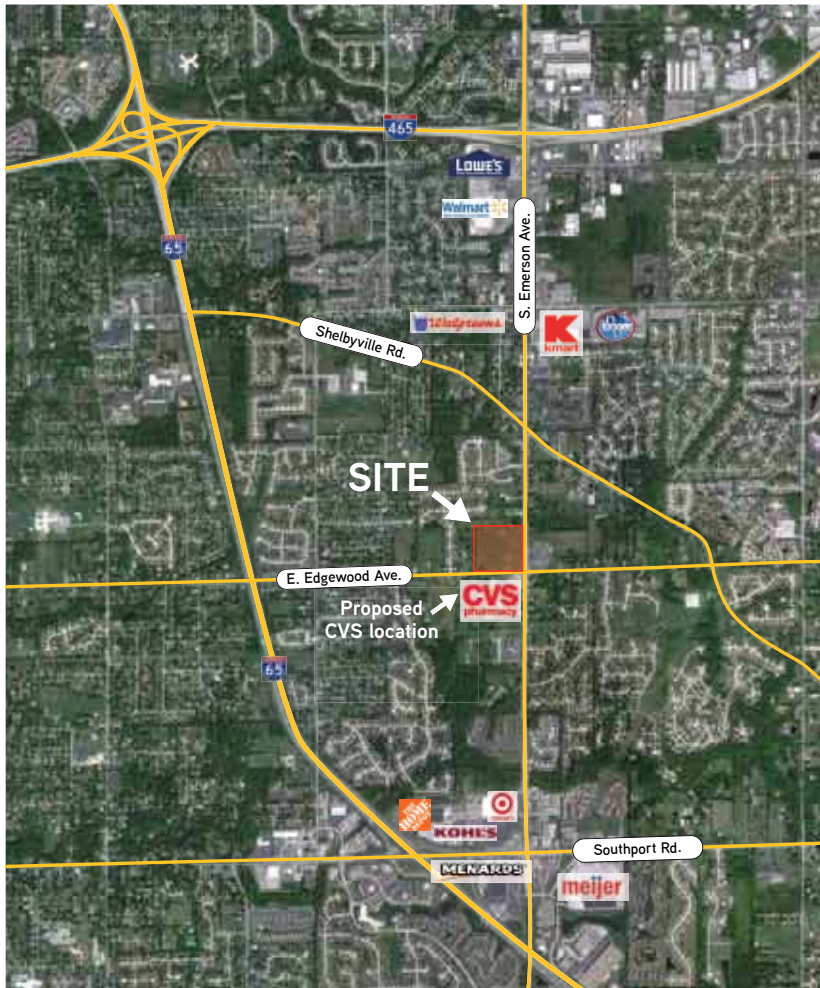
*pulled from 2012 SitesUSA

The expansion of Emerson Avenue to four lanes is now complete, which allows for increased traffic counts on Emerson Ave. of 35,850 in 2015.

Beth Patterson, Senior Vice President
& Director of Retail Services
Indiana Region
Direct 317 663 6558
Mobile 317 514 8454
beth.patterson@colliers.com

COLLIERS INTERNATIONAL
9339 Priority Way West Drive
Suite 120
Indianapolis, IN 46240
www.colliers.com

Southeast Indy > Office/Retail Property



Contact Us

Beth Patterson, Senior Vice President
& Director of Retail Services

Indiana Region

Direct 317 663 6558

Mobile 317 514 8454

beth.patterson@colliers.com

COLLIERS INTERNATIONAL
9339 Priority Way West Drive, Suite 120
Indianapolis, IN 46240
www.colliers.com

The information contained herein was obtained from sources we consider reliable. We cannot be responsible for errors, omissions, prior sale or lease, withdrawal from the market or change in price. Seller and broker make no representation as to the environmental condition of the property and recommend the lessee's/purchaser's independent investigation.

